

# Stroke

## EDITORIAL

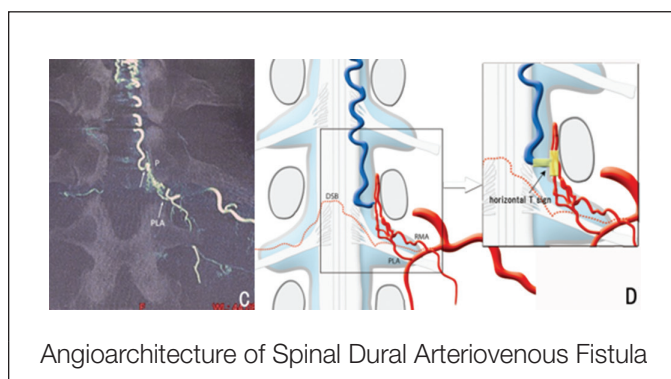
Difficult to Make Predictions

## CLINICAL SCIENCES

Linoleic Acid and Ischemic Stroke  
Midlife Inflammation and White Matter Integrity  
Whole Grain Consumption and Ischemic Stroke  
Prevalence of Superficial Siderosis  
Spinal Dural and Epidural Arteriovenous Fistulas  
Biomarkers of Recurrent Stroke  
Stroke in Short-Run Atrial Tachyarrhythmia  
Selective Serotonin-Reuptake Inhibitors and Thrombolysis  
Statins and the Risk of Intracerebral Hemorrhage  
Predictors of Outcomes in Vertebrobasilar Stroke  
Comparison to Arterial Parenchymal Abnormalities  
Echo Risk Factors for Stroke in Atrial Fibrillation  
MT for Minor and Mild Stroke Patients  
Mechanical Thrombectomy vs Bridging Thrombolysis  
Tirofiban for AIS Patients Treated With ET  
Mobile Interventional Stroke Teams  
Circulating Endothelial Markers in RVCL-S  
Prediction of Outcome After Stroke Rehabilitation  
Stroke Preparedness Campaigns and Patients' Delay  
Executive Function Declines After TIA or TNA  
No Racial Difference in Rehabilitation Therapy

## BASIC SCIENCES

FTY720 Modulates MG Polarization After WM Ischemia  
Stroke and tPA Therapy in Sickie Mice  
CD147 and Stroke



Angioarchitecture of Spinal Dural Arteriovenous Fistula

2-CI-MGV-1 Reduces Apoptosis and Cognitive Deficit  
GABAergic Neurons Affect Outcomes After Ischemia

## BRIEF REPORTS

Climatic and Seasonal Factors of Hypertensive-ICH  
Sex-Specific Outcomes After Ischemic Stroke  
NIRS During Mechanical Thrombectomy  
ONYX Embolization for Unruptured BAVM  
The PLUMBER Study

## COMMENTS AND OPINIONS

Sleep and Stroke  
Microbleeds and Antithrombotics in Atrial Fibrillation

## SPECIAL REPORT

Reconsidering Neuroprotection

## TOPICAL REVIEW

Genetics of ICH

# Stroke

JOURNAL OF THE AMERICAN HEART ASSOCIATION



48 (12)

*Stroke*. 2017;48:e367-3424

*Stroke* is published by the American Heart Association, 7272 Greenville Avenue, Dallas, TX 75231

Copyright © 2017 American Heart Association, Inc. All rights reserved.

Print ISSN: 0039-2499. Online ISSN: 1524-4628

The online version of this article, along with updated information and services, is located on the World Wide Web at:

<http://stroke.ahajournals.org/content/48/12>

**Permissions:** Requests for permissions to reproduce figures, tables, or portions of articles originally published in *Stroke* can be obtained via RightsLink, a service of the Copyright Clearance Center, not the Editorial Office. Once the online version of the published article for which permission is being requested is located, click Request Permissions in the middle column of the Web page under Services. Further information about this process is available in the [Permissions and Rights Question and Answer](#) document.

**Reprints:** Information about reprints can be found online at:  
<http://www.lww.com/reprints>

**Subscriptions:** Information about subscribing to *Stroke* is online at:  
<http://stroke.ahajournals.org/subscriptions/>